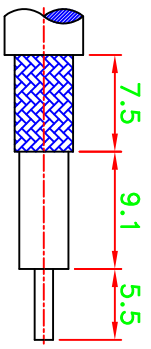
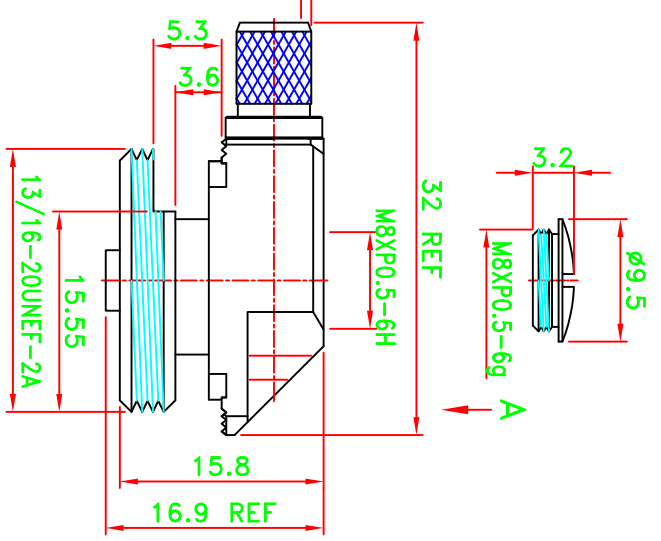
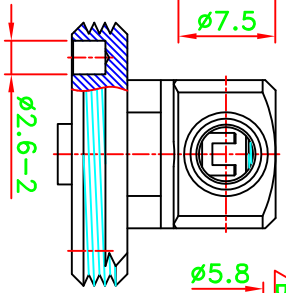
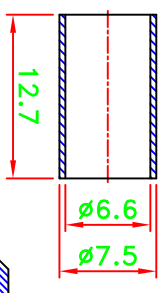


REV	DESCRIPTION\PER REQUEST	DRAWN	DATE

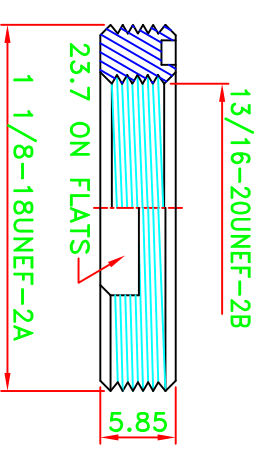
**RECOMMENDED CRIMP SIZE:
CONTACT PIN:SOLDER
FERRULE:HEX .256"**



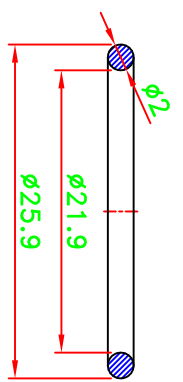
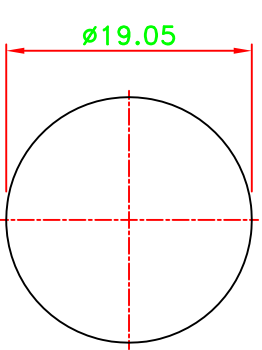
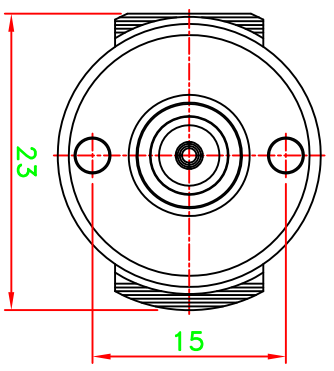
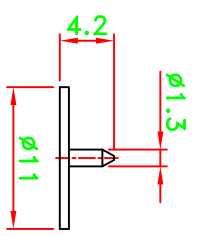
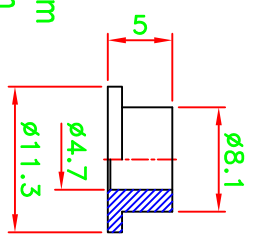
**RECOMMENDED
CABLE STRIPPING DIM'S**



LASER ETCHED: AIR802



Electrical Characteristics
 Characteristic Impedance:50ohm
 Frequency Range:0~6GHz
 Insulation Resistance:1000Mohm
 Center Contact Resistance:≤5.0mohm
 Outer Contact Resistance:≤2.5mohm
 Working Voltage:300V rms



**RECOMMENDED
MOUNTING HOLE
THICKNESS:1mm MIN.
2mm MAX.**

11	NUT	1	BRASS	NICKEL
10	"O"RING	1	RUBBER	BLACK
9	SCREW	1	BRASS	NICKEL
8	FERRULE	1	COPPER	NICKEL
7	BARREL	1	BRASS	NICKEL
6	PRESS FIT WASHER	1	BRASS	NICKEL
5	INSULATOR	1	PTFE	NATURAL
4	INSULATOR	1	PTFE	NATURAL
3	PIN	1	BRASS	GOLD
2	PIN	1	BRASS	GOLD
1	BODY	1	BRASS	NICKEL

JOC60R001-001

AIR802

NMO R/A CRIMP CONNECTOR

PART NO.		* MAJOR DIMENSION	
CN3NMOLP		UNLESS OTHERWISE NOTED	
APPROVED	DATE	0.5-6=±0.2	TITLE
M. Bryant	03/14/24	6-30=±0.4	NMO R/A CRIMP CONNECTOR
CHECKED	DATE	30-120=±0.6	DRAWING NO.
	03/14/24	120-315=±1.0	AS-23138-Z-TGN
DRAWN	DATE	ANGLES=±5°	REV
Kdi	03/14/24		B
SCALE	UNIT	FILE NO. W:\pr\as\aspr\as-23138-Z-TGN AIR802->20240314	
5/3	mm		